


名大

NAGOYA
UNIVERSITY

 名古屋大学

GENERAL INFORMATION

Nagoya University is a comprehensive research university located in the Tokai region of Japan, a region known for its manufacturing and industry. Originating from a medical school and public hospital established in 1871, Nagoya University was founded as an Imperial University in 1939, and then became a National University in 1949. Over the years, Nagoya University has fostered a free and open academic culture. This liberal environment played a crucial part in the success of the six faculty members honored with Nobel Prizes. Today, as one of the world's leading research universities, Nagoya University is dedicated to improving our education and research capabilities and contributing to a better world.

Our Mission

Nagoya University, through open academic principles, seeks to improve society via innovative research and education.

Nagoya University Next Vision 2027

A leading global research university where innovation shapes the future



Pride and joy from learning and achievement

Four Strategies

Education

Our goal is to support world-class education and human resource development, from high school through undergraduate and graduate school to lifelong learning.



Research

We are a hub for world-class researchers and for creating intellectual and scientific advancements.



Social Impact

Located in the leading industrial region of Japan, we generate new value and address global and local challenges.



International Activities

We are increasing our international activities through collaborative research and education.



Nagoya University in Figures

15,843  Students

2,454 Faculty members
(1,631 Tenured and tenure track faculty members)
as of May 1, 2024

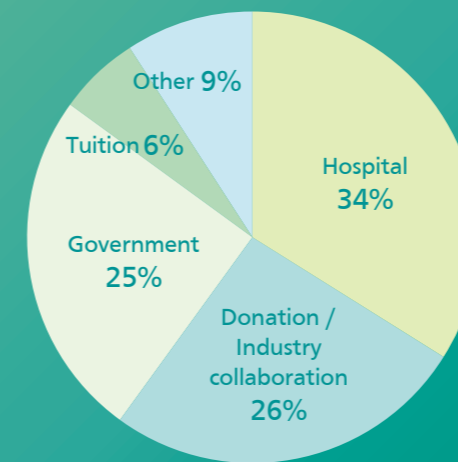
6,334 Graduate students
9,509 Undergraduate students
as of May 1, 2024

2 Semesters
Spring (Apr.-Sep.)
Fall (Oct.-Mar.)

2,640 International students
as of academic year 2023

9 Undergraduate Schools
13 Graduate Schools
as of May 1, 2024

Sources of Annual Revenue



136 billion yen
as of academic year 2023



6th Times Higher Education (THE) University Rankings 2025 of Japanese universities

6th QS World University Rankings 2025 of Japanese universities

6 Nobel laureates



- Isamu Akasaki and Hiroshi Amano (2014, Physics)
- Makoto Kobayashi and Toshihide Maskawa (2008, Physics)
- Osamu Shimomura (2008, Chemistry)
- Ryoji Noyori (2001, Chemistry)

3,393,905 Books in libraries
as of April 1, 2024



168 University start-ups
as of April 1, 2024



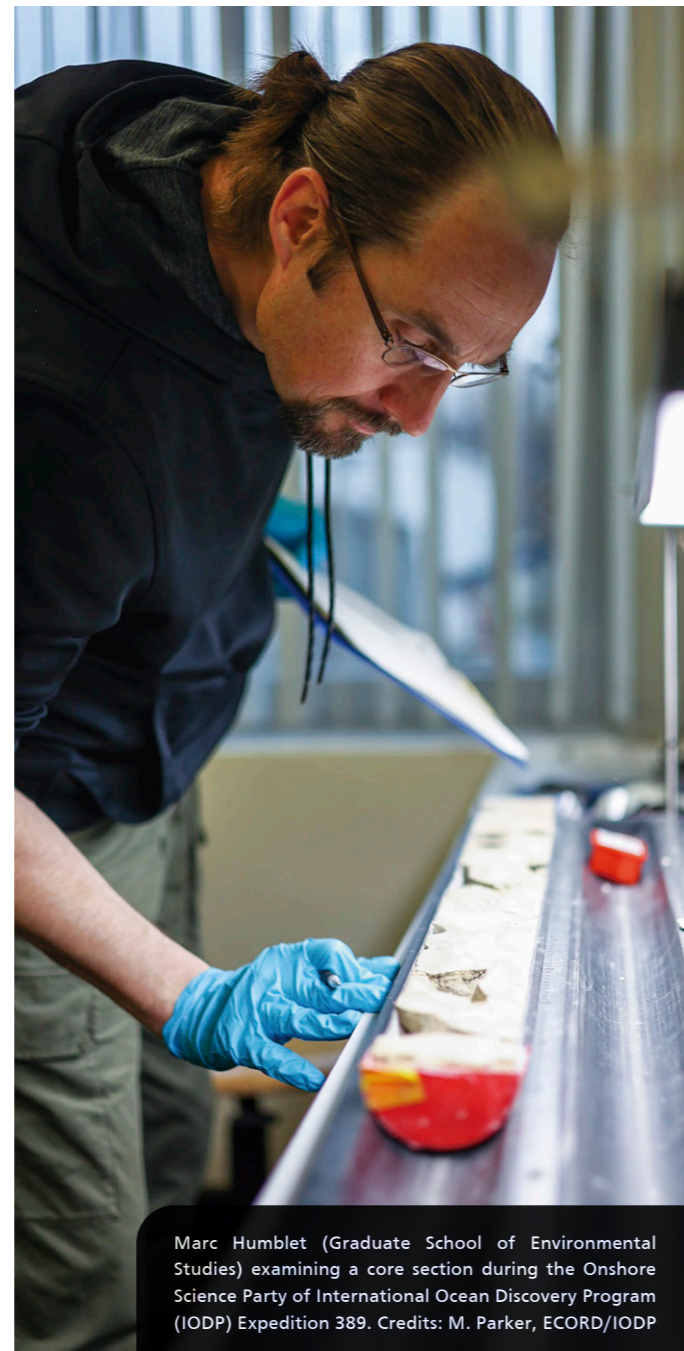
RESEARCH

Researchers at Nagoya University endeavor to innovate and generate discoveries that will advance knowledge and benefit society. As a comprehensive university, we undertake research across a diverse range of subjects in engineering, the natural sciences, the humanities, and the social sciences. Our seven priority research areas are:

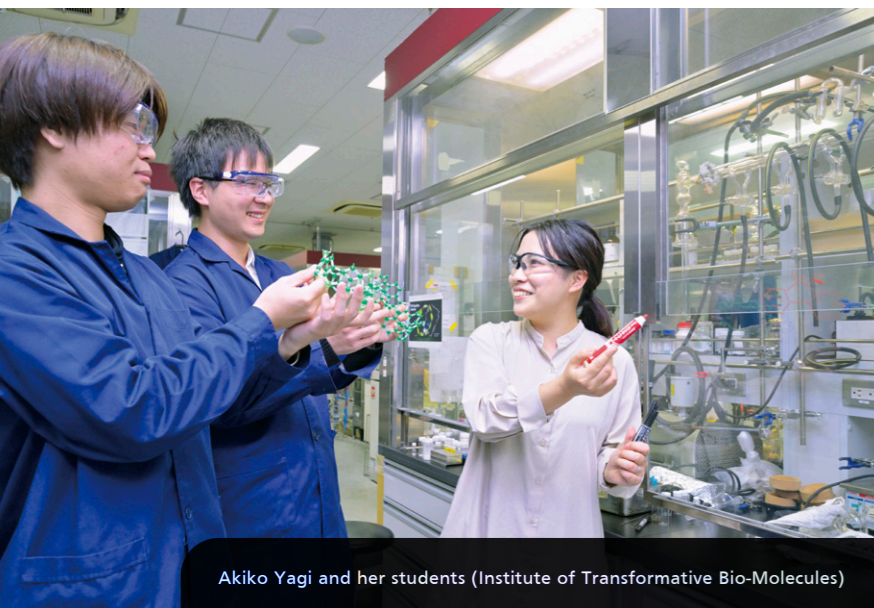
- Biochemistry, Genetics & Molecular Biology
- Chemistry
- Physics & Astronomy
- Earth Science
- Neuroscience & Immunology
- Botany & Zoology
- Materials Science



Nicolas Baumert (Division of Academic Writing Education, Institute of Liberal Arts and Sciences)



Marc Humblet (Graduate School of Environmental Studies) examining a core section during the Onshore Science Party of International Ocean Discovery Program (IODP) Expedition 389. Credits: M. Parker, ECORD/IODP



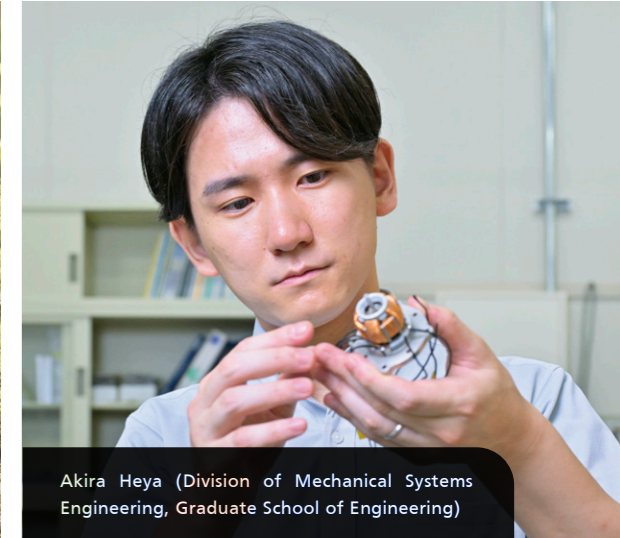
Akiko Yagi and her students (Institute of Transformative Bio-Molecules)

Flagship Research Organizations

- Center for Asian Legal Exchange (CALE)
 - Institute for Advanced Research (IAR)
 - Institute for Space-Earth Environmental Research (ISEE)
 - Institute of Materials and Systems for Sustainability (IMaSS)
 - Institute of Transformative Bio-Molecules (ITbM)
 - Institutes of Innovation for Future Society
 - Integrated Research Consortium on Chemical Sciences (IRCCS)
 - International Center for Research and Education in Agriculture (ICREA)
 - Kobayashi-Maskawa Institute for the Origin of Particles and the Universe (KMI)
 - Research Institute of Environmental Medicine (RIEM)
- As part of the Tokai National Higher Education and Research System
- Institute for Glyco-core Research (iGCORE)



Researchers (Graduate School of Bioagricultural Sciences) at the Nagoya University Farm



Akira Heya (Division of Mechanical Systems Engineering, Graduate School of Engineering)



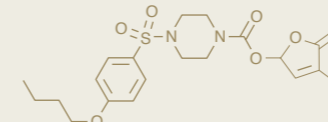
Ryo Kanamori (Global Research Institute for Mobility in Society, Institutes of Innovation for Future Society)



Eri Wada (Division of Stress Recognition and Response, Research Institute of Environmental Medicine)

Basic research to address global problems

At Nagoya University, basic research has yielded results that help tackle social issues. For example, researchers in the Institute of Transformative Bio-Molecules (WPI-ITbM), where scientists are merging chemistry and biology to create impactful molecules, have succeeded in developing a molecule called sphynolactone-7 (SPL7). They revealed SPL7 can potentially eliminate a parasitic plant known as Striga. This plant causes significant damage to crops in Africa. Since SPL7 can be synthesized in large quantities at a low cost, it may play a crucial role in addressing food scarcity in the region.



Research for a better society

A number of Nagoya University's research results have had tangible positive effects on the world we live in. For example, efficient blue light-emitting diodes (LEDs) were invented by our Professor Emeritus, the late Isamu Akasaki, and Professor Hiroshi Amano. They were awarded the 2014 Nobel Prize in Physics for this invention. Blue LEDs can be used to create long-lasting and energy-efficient bright white LED lamps. According to the Nobel Prize organization, the LED lamp holds great promise for improving the quality of life for more than 1.5 billion people around the world who have no access to the electrical grid: because of its low power consumption, it can be powered by cheap local solar energy.



EDUCATION

Nagoya University is a comprehensive research university with nine undergraduate and 13 graduate schools. We have about 10,000 undergraduate students and 6,000 graduate students. In 2024 we welcomed approximately 2,600 international students from over 100 countries.



Schools

- School of Humanities
- School of Education
- School of Law
- School of Economics
- School of Informatics
- School of Science
- School of Medicine
- School of Engineering
- School of Agricultural Sciences

Graduate Schools

- Graduate School of Humanities
- Graduate School of Education and Human Development
- Graduate School of Law
- Graduate School of Economics
- Graduate School of Informatics
- Graduate School of Science
- Graduate School of Medicine
- Graduate School of Engineering
- Graduate School of Bioagricultural Sciences
- Graduate School of International Development
- Graduate School of Mathematics
- Graduate School of Environmental Studies
- Graduate School of Pharmaceutical Sciences

Cultural and Sports Club Activities

There are 119 cultural and sports clubs officially recognized by Nagoya University. Engaging in club activities offers students the opportunity to make friends from different countries and schools.



INTERNATIONAL EDUCATION PROGRAMS

G30 – A full-degree program taught in English



Since 2011, Nagoya University has offered full degree programs taught in English through the G30 International Programs. They are open to all students with an international educational background, including Japanese students. Their aim is to promote global academic exchange and offer students from around the world the chance to study at Nagoya University.

Ten undergraduate courses are available, including Automotive Engineering (Mechanical Engineering), Automotive Engineering (Electrical, Electronic and Information Engineering), Physics, Chemistry (Engineering), Chemistry (Science), Biological Sciences (Agricultural Science), Biological Sciences (Science), Law, Economics, and Japan-in-Asia Cultural Studies. Twelve graduate programs are also available.

Each year, Nagoya University admits about 50 students to the undergraduate programs. Japanese students may also enroll in G30 classes. They get the chance to enhance their English language skills and develop a wider perspective through interactions with international peers and an interactive teaching style.



NUPACE – Nagoya University’s flagship exchange program



The Nagoya University Program for Academic Exchange (NUPACE), established in February 1996, has hosted a total of 3,020 international students from partner institutions in 40 countries/regions. The program welcomes both undergraduate and graduate students for a semester or full academic year. Students benefit from an extensive selection of courses in their major, the potential to conduct research under the guidance of an academic advisor, as well as abundant opportunities to engage in cross-cultural activities.



Joint Degree Programs

A joint degree program (JDP) is a unified degree created through international collaboration between multiple universities. Nagoya University and the partner university jointly examine the theses for JDP degrees and collectively award a single degree, guaranteeing international quality standards. Nagoya University collaborates with several universities from around the world to offer the following JDPs:

- Science: University of Edinburgh (United Kingdom)
- Medicine: University of Adelaide (Australia), Lund University (Sweden), and University of Freiburg (Germany)
- Bioagricultural Sciences: Kasetsart University (Thailand) and University of Western Australia (Australia)
- Engineering: Chulalongkorn University (Thailand)

INTERNATIONAL ACTIVITIES AND PROGRAMS

Global Multi-Campus

Nagoya University established the Global Multi-Campus (GMC) in 2022 to promote its research and academic activities in cooperation with leading overseas universities in the Asia-Pacific region, North America, and Europe.

Collaboration with strategic partner universities

Nagoya University has signed strategic partnership agreements with multiple universities around the world. Through these agreements, the GMC promotes joint educational and research activities and student and researcher exchange to expand our international reach and build a multicultural learning environment.

In 2023, we established the Global Campus at North Carolina State University. This Campus is expected to become a hub for both universities to conduct new dual-degree programs, large-scale student exchanges, joint faculty research with industry partners, and global internships for students from both institutions. In the same year, we also established a Global Campus at the National University of Singapore. We continue our efforts to expand our international network in line with the GMC concept.



Students of NC State University and Nagoya University at the NC Courage soccer match

Programs in Asia

Asian Satellite Campuses Institute (ASCI)

Since 2014, the Nagoya University Asian Satellite Campuses Institute (ASCI) has been offering the Transnational Doctoral Programs for Leading Professionals in Asian Countries. This is a research-centric program designed for midcareer professionals holding government and academic positions across 12 countries: Bangladesh, Cambodia, Kazakhstan, Kyrgyzstan, Indonesia, Laos, Malaysia, Mongolia, the Philippines, Thailand, Uzbekistan, and Vietnam.

Through online learning, on-site faculty advising, and short-term visits to Japan, ASCI provides an opportunity for students to earn a doctoral degree from seven graduate schools at Nagoya University. These are Education and Human Development, Law, Medicine, Engineering, Bioagricultural Sciences, International Development, and Environmental Studies. This program enables students to pursue their degree while continuing to work in their home country.

ASCI enhances Nagoya University's strategy as an "Asian hub university" by cultivating leaders in the region and broadening its collaborative network.



At Royal University of Agriculture in Cambodia

Center for Asian Legal Exchange (CALE)



The Center for Asian Legal Exchange (CALE), in cooperation with the Graduate School of Law, contributes to legal assistance projects in Asia, working together with the Japanese government. Its three missions are to conduct research on laws in Asia and the study of legal assistance; to educate future experts who can contribute to developing the legal and judicial systems of their home countries; and to train Japanese students to conduct research and contribute to legal assistance.

The Research and Education Center for Japanese Law (CJL) was established by CALE in Cambodia, Mongolia, Uzbekistan and Vietnam. CJL educates undergraduate students, who aim to help reforming their countries' legal systems, by providing them the opportunity to study Japanese law in the Japanese language. A limited number of students can proceed to graduate programs at Nagoya University or other Japanese universities. CJL alumni are expected to assume important positions in governments, universities, law firms, and companies in Japan or their home countries.

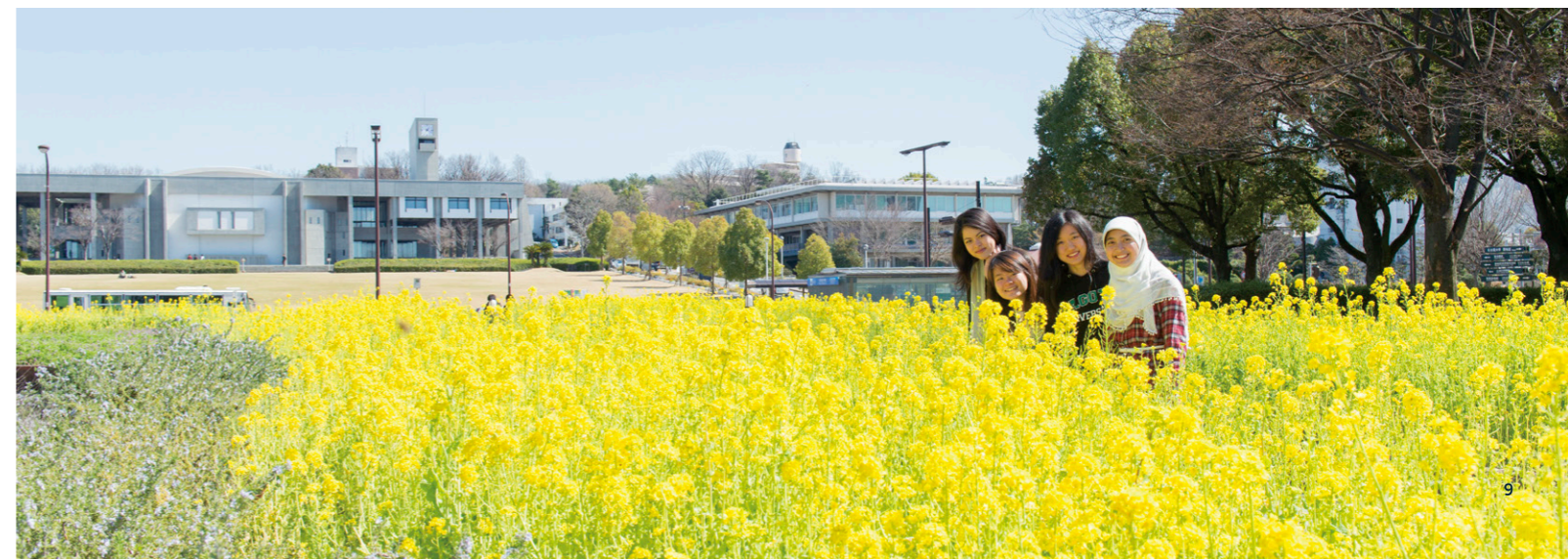
Young Leaders Program (YLP)

The Japanese Government Scholarship system includes the Young Leaders Program (YLP) which aims to cultivate future leaders in Asia and around the world. Nagoya University offers a one-year YLP master's course available in healthcare administration. This program welcomes government officers from 12 Asian countries who are responsible for health policy, management of public health institutions, and public health. Graduates are expected to demonstrate leadership in addressing various health and medical care challenges in their countries.

Membership in International Consortia

Nagoya University promotes international exchange with universities and other institutions through its membership in the following consortia and collaborative networks:

- Association of Pacific Rim Universities (APRU)
- Japan Academic Network in Europe (JANET)
- Japanese University Network Bridging the Americas (JUNBA)
- MIRAI (collaboration between Japanese and Swedish universities)
- University-Based Institutes for Advanced Study (UBIAS)



COLLABORATION WITH SOCIETY AND INDUSTRY



Nagoya University has a strong history of partnering with industry on research projects. These initiatives cover areas such as mobility, advanced materials, and energy. We have recently entered into partnerships with companies in the life sciences and quantum science. Our goal is to share knowledge with society by promoting open innovation and supporting startups.



Demonstrating the performance of an autonomous vehicle (Global Research Institute for Mobility in Society, Institutes of Innovation for Future Society)

Entrepreneurship and Startups

Nagoya University is expanding its social impact by fostering innovation and entrepreneurship through strategic partnerships. Domestically, it partners with STATION Ai, Japan's leading startup incubator, granting students, researchers, and university spin-offs access to cutting-edge resources and a network of industry experts. Internationally, Nagoya University's Singapore office at BLOCK71, established as the first Japanese partnership with the National University of Singapore (NUS) Enterprise, serves as a node in Asian and global innovation networks. These partnerships create pathways for translating research into solutions with social impact and connecting local innovation with global opportunities.

Nagoya University's commitment to encouraging innovation begins with the Deep Tech Serial Innovation Center (D-center), which takes an interdisciplinary approach to entrepreneurial education. Rather than focusing only on creating future entrepreneurs, D-center develops the innovative thinking and problem-solving capabilities essential for all students seeking to launch startups or lead innovation within existing organizations. Nagoya University students can also participate in Tongali, a consortium of 26 universities and research institutions in the Tokai region of central Japan. Through Tongali's programs, including workshops, business competitions and international training, participants can develop ideas. IdeaStoa, a co-working space located within the National Innovation Complex of Nagoya University's Higashiyama Campus, is the venue for many of these events. The GAP Fund program offers financial support and expertise, transforming innovative ideas into market-ready products and providing students and researchers with business skills and industry connections to launch ventures.

As of October 2024, among 168 startups, we have officially recognized 79 companies as Nagoya University-based startups. For example, TOWING Co., Ltd., founded in 2020, develops and sells a high-performance biochar product called Soratan. Biochar is a carbon-rich material produced by heating organic biomass such as agricultural and forestry waste in a low-oxygen environment. Soratan is created using advanced microbiology technology, combining biochar with organic fertilizers to enhance soil quality. By leveraging the activity of microorganisms, Soratan improves nitrogen production ability in the soil. This transforms soil into high-quality farmland in just one month, compared to the multiple years required by traditional methods, thereby contributing to sustainable agriculture.

THE CITY OF NAGOYA AND AICHI PREFECTURE

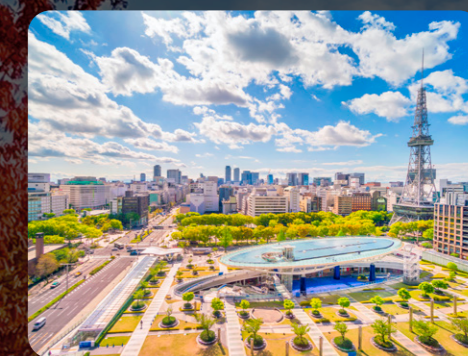
Nagoya University is located in Nagoya, Japan's fourth largest city. It has about 2.3 million residents and is the capital of Aichi Prefecture. Throughout Aichi, you can find a cluster of global companies in the automotive, aerospace, and robotics industries.

Nagoya is a city that offers convenient living and vibrant residential and commercial spaces. The Shinkansen (bullet train) stops at Nagoya Station, allowing convenient travel to Tokyo, Osaka, and other prefectures.

- 1.5 hours to Tokyo
- 50 minutes to Osaka
- 30 minutes to Kyoto

In addition, there are train and bus connections to Chubu Centrair International Airport, connecting Nagoya to countries around the world.

Nagoya is a city filled with greenery in its parks and surrounding mountains. The campuses of Nagoya University are also blessed with a variety of trees that show their beauty every season.



ACCESS TO NAGOYA UNIVERSITY

To Higashiyama Campus

From Nagoya Railway Station:
20 minutes by subway.
Take the Higashiyama Line to Motoyama Station, then transfer and take the Meijo Line to Nagoya Daigaku Station.

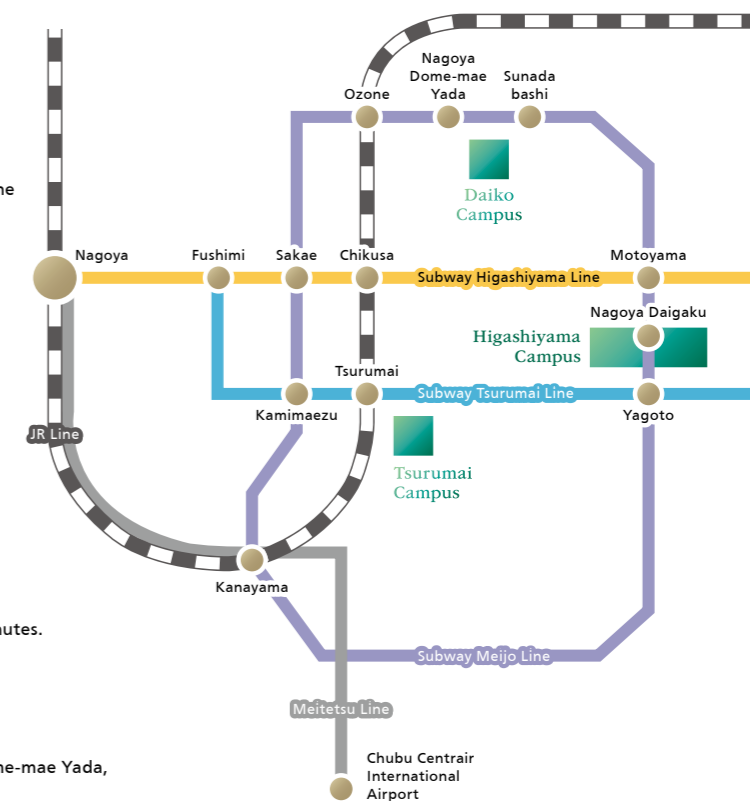
From Chubu Centrair International Airport to Nagoya University:
60 minutes by train and subway.
At Centrair take the Meitetsu Line to Kanayama Station.
From Kanayama Station take the Subway Meijo Line (counter-clockwise) to Nagoya Daigaku Station.

To Tsurumai Campus

Take the JR Chuo Line or the Subway Tsurumai Line to Tsurumai Station, and walk 5 minutes.

To Daiko Campus

Take the Subway Meijo Line to either Sunada-bashi or Nagoya Dome-mae Yada, and walk five minutes.





International Communications Office
Furo-cho, Chikusa-ku, Nagoya, Aichi 464-8601, Japan
Email address: icomm@t.mail.nagoya-u.ac.jp
Website: <https://en.nagoya-u.ac.jp>

